

Technical specification sheet

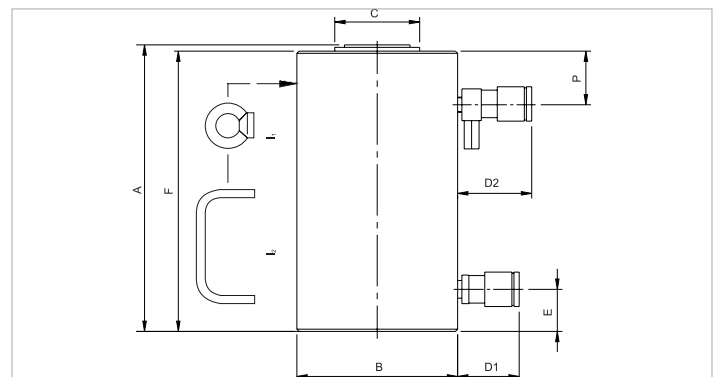
HJ 300 H 30 | Cylinder

Specifications			
article number			100.122.083
short description			Cylinder
model			HJ 300 H 30
max. working pressure	psi		10443
tonnage	lb		661387.0
stroke	in		11.8
closed height	in		21.5
capacity	lbf		659365
effective pressure area (press)	sq. in.		64.4
effective pressure area (retract)	sq. in.		20.4
required oil content (press)	oz		421
required oil content (retract)	oz		132.9
connection			A 118
cylinder type			high tonnage
acting type			double
return type			hydraulic
material			steel
weight, ready for use	lb		793.7

Technical drawing dimensions			
dimension A	in		21.5
dimension B	in		12.4
dimension C	in		7.5
dimension D1	in		2.8
dimension D2	in		3.3
dimension E	in		3.1
dimension F	in		21.3
dimension P	in		3
I type			[I1]

Standard supplied with	
• High Flow female coupler A 118	
• Flat saddle	

Accessories	
Tilting Saddle S 500 TN	100.999.232



holmatro.com

© Holmatro 2020-05-31

While the greatest care has been devoted to the content, it is possible that the information in this printed matter is incorrect or incomplete. Holmatro B.V. and its affiliated companies (hereafter: Holmatro) cannot be held liable in any way for the consequences of activities undertaken on the basis of this printed matter. Values can vary within the manufacturer measurements. If you have any doubts about the correctness or completeness of the information, you shall contact Holmatro (T +31 (0)162-751480). Nothing from this printed matter can be copied and/or made public in any way without the explicit authorisation of Holmatro.