

Technical specification sheet

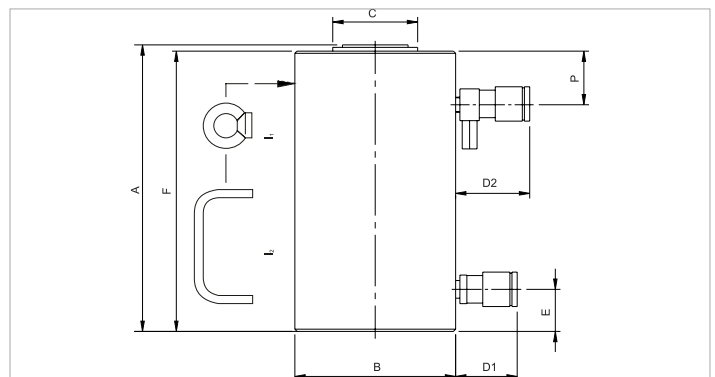
HJ 150 H 30 | Cylinder

Specifications			
article number			100.122.062
short description			Cylinder
model			HJ 150 H 30
max. working pressure	psi		10443
tonnage	lb		330693.0
stroke	in		11.8
closed height	in		19.8
capacity	lbf		345958
effective pressure area (press)	sq. in.		33.1
effective pressure area (retract)	sq. in.		17.1
required oil content (press)	oz		216.9
required oil content (retract)	oz		111.6
connection			A 118
cylinder type			high tonnage
acting type			double
return type			hydraulic
material			steel
weight, ready for use	lb		282.2

Technical drawing dimensions			
dimension A	in		19.8
dimension B	in		8.9
dimension C	in		4.5
dimension D1	in		2.8
dimension D2	in		3.3
dimension E	in		2.2
dimension F	in		19.5
dimension P	in		2.8
I type			[I1]

Standard supplied with	
• High Flow female coupler A 118	
• Flat saddle	

Accessories	
Tilting Saddle S 100 TN	100.181.044



holmatro.com

© Holmatro 2020-05-31

While the greatest care has been devoted to the content, it is possible that the information in this printed matter is incorrect or incomplete. Holmatro B.V. and its affiliated companies (hereafter: Holmatro) cannot be held liable in any way for the consequences of activities undertaken on the basis of this printed matter. Values can vary within the manufacturer measurements. If you have any doubts about the correctness or completeness of the information, you shall contact Holmatro (T +31 (0)162-751480). Nothing from this printed matter can be copied and/or made public in any way without the explicit authorisation of Holmatro.