

Technical specification sheet

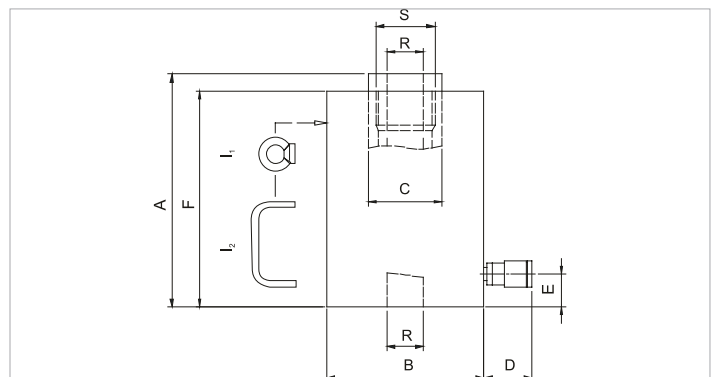
HHJ 110 S 7.5 | Hollow Plunger Cylinder

Specifications		
article number		100.112.101
short description		Hollow Plunger Cylinder
model		HHJ 110 S 7.5
max. working pressure	psi	10443
tonnage	lb	242508.0
stroke	in	3
closed height	in	12.4
capacity	lbf	249043
effective pressure area	sq. in.	23.9
required oil content (effective)	oz	39.1
connection		A 118
cylinder type		hollow plunger
acting type		single
return type		spring
material		steel
weight, ready for use	lb	172.6

Technical drawing dimensions		
dimension A	in	12.4
dimension B	in	9.4
dimension C	in	5.1
dimension D	in	2.8
dimension E	in	1.6
dimension F	in	11.6
dimension R	in	3.1
dimension S	threadsize	M105x2
l type		[1]

Standard supplied with	
• High Flow female coupler A 118	
• Hollow saddle, with the exception of the HHJ 5 S 2.5, HHJ 12 S 5 and HHJ 12 S 15 cylinders	

Accessories	
Hollow Saddle S 110 SP	100.181.029
Flat Saddle S 110 B	100.181.027
Thread Saddle S 110 C	100.181.028



holmatro.com

© Holmatro 2020-07-21

While the greatest care has been devoted to the content, it is possible that the information in this printed matter is incorrect or incomplete. Holmatro B.V. and its affiliated companies (hereafter: Holmatro) cannot be held liable in any way for the consequences of activities undertaken on the basis of this printed matter. Values can vary within the manufacturer measurements. If you have any doubts about the correctness or completeness of the information, you shall contact Holmatro (T +31 (0)162-751480). Nothing from this printed matter can be copied and/or made public in any way without the explicit authorisation of Holmatro.