

Technical specification sheet

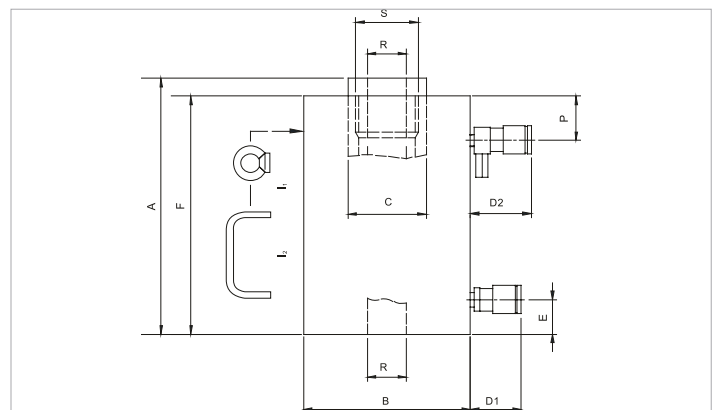
HHJ 100 H 20 | Hollow Plunger Cylinder

Specifications		
article number		100.122.053
short description		Hollow Plunger Cylinder
model		HHJ 100 H 20
max. working pressure	bar/Mpa	720 / 72
tonnage	t	100
stroke	mm	200
closed height	mm	395
capacity (press)	kN/t	1018.5 / 103.9
capacity (retract)	kN/t	706.9 / 72.1
effective pressure area (press)	cm ²	141.5
effective pressure area (retract)	cm ²	98.2
required oil content (press)	cc	2830
required oil content (retract)	cc	1964
connection		A 118
cylinder type		hollow plunger
acting type		double
return type		hydraulic
material		steel
weight, ready for use	kg	78.0

Technical drawing dimensions		
dimension A	mm	395
dimension B	mm	210
dimension C	mm	100
dimension D1	mm	70
dimension D2	mm	85
dimension E	mm	52
dimension F	mm	375
dimension P	mm	75
dimension R	mm	54
dimension S	threadsize	M72x2
I type		[I1]

Standard supplied with	
• High Flow female coupler A 118 on inlet port	
• High Flow female coupler with pressure relief valve A 418 on outlet port	
• Hollow saddle	

Accessories	
Flat Saddle S 100 B	100.181.024
Thread Saddle S 100 C	100.181.025



holmatro.com

© Holmatro 2021-09-10

While the greatest care has been devoted to the content, it is possible that the information in this printed matter is incorrect or incomplete. Holmatro B.V. and its affiliated companies (hereafter: Holmatro) cannot be held liable in any way for the consequences of activities undertaken on the basis of this printed matter. Values can vary within the manufacturer measurements. If you have any doubts about the correctness or completeness of the information, you shall contact Holmatro (T +31 (0)162-751480). Nothing from this printed matter can be copied and/or made public in any way without the explicit authorisation of Holmatro.