

Valve Lockout Device

Option LD

Lockout Device for Heavy Duty Valves

Features

- ▶ Fits Heavy Duty Valves: 1/2" & 1"
- ▶ Locks in all three positions
- ▶ Easily retrofitted in the field
- ▶ Resistance to oils and fuels
- ▶ Optional corrosion-resistant locks

Applications

- ▶ BOP closing unit 'OPEN-CLOSE'
- ▶ Safety lockout
- ▶ Maintenance shutdown



Product Overview

The Valve Lockout Device is used to mechanically stop the handle from rotating to ensure that the valve remains inoperable while technicians carry out maintenance work. The Valve Lockout Device is attached to the operational part of the heavy duty valve to prevent the valve from changing position. Valve lockouts help prevent potentially harmful accidents during maintenance or repairs and allow workers to close off or isolate energy sources such as hydraulic pressure and fluids. This specific lockout device is designed for use on a heavy duty valve to stop any rotation of the handle.

This lockout device meets the scope of OSHA 1910.147, subpart O.

General Specifications*

Material:	Zinc plated carbon steel
Weight:	
1/2" Port size	0.7 lbs (0.34 kg)
1" Port size	1.6 lbs (0.72 kg)

Installation Instruction:	<ul style="list-style-type: none"> - Remove the two bolts and nuts on the side where the detent holes are. - Install the bracket on the housing. - Retighten the bolts and nuts with torque wrench to: <ul style="list-style-type: none"> • 180 in³/lbs for 1/2" • 480 in³/lbs for 1" - Remove all the components on top of the valve to the detent disc. - Discard the detent disc. Install the new detent disc. - Re-install all components on top of the valve. - Tighten the handle nut finger tight then wrench it a half turn.
----------------------------------	--

Valve Lockout Device

Option LD

Lockout Device for Heavy Duty Valves

When ordering together with Heavy Duty Valves

Product Configurator

Example:	145R3WC3	-LD
----------	----------	-----

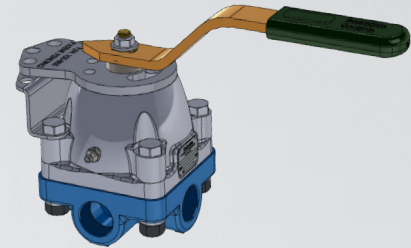
Base Model

-LD ¹	Lockout device
------------------	----------------

Technical Drawing

DIMENSIONS in inches (mm)

Port Size NPT	A	B	C	D	E	F	G	H	J	K
1/2"	3.4 (85.8)	7 (177.8)	6.7 (169.3)	2.4(60.4)	3.3 (83.1)	3.2 (80.3)	1.1 (27.1)	0.7 (17.6)	3.8 (97.7)	3 (75.4)
1"	4.8 (121.4)	10 (253.7)	8.8 (223.1)	3.6 (92)	3.9 (99.5)	4.3 (110.3)	1.3 (31.8)	1.0 (25.9)	5.2 (132.5)	3.6 (90.5)



When ordering separately as a spare part

Product Configurator

Example:	KD2535	-3
----------	--------	----

Base Model

KD2535	Lockout device
--------	----------------

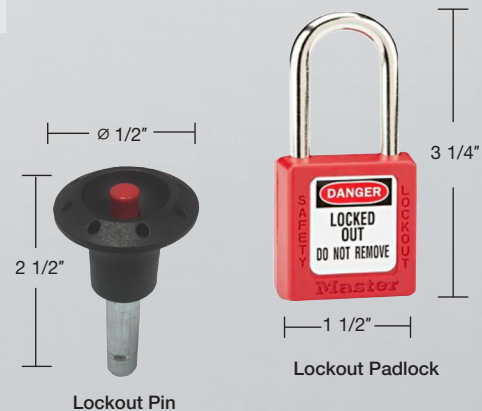
Size

-3	Fits 1/2" Heavy Duty Valves
-5	Fits 1" Heavy Duty Oil & Gas Valves only



Accessories

254139	Lockout Pin
25835	Lockout Padlock



Notes

¹ Only available on 1/2" valves & 1" Oil and Gas valves.