

DOUBLE-PISTON QUARTER TURN ACTUATORS

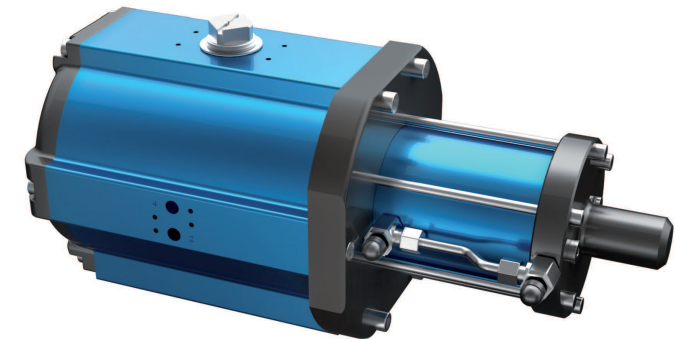
TYPE SAD-HD / SAF-HD 90°

Technical Data

Design :	Pneumatic double-piston quarter turn actuator with hydraulic damping
Design features :	Rack-and-pinion system, piston guide via guide rods Adjustable operating times to avoid pressure impacts in the piping system Operating time independent from working pressure
Angle of rotation :	0°-90°, also available in 135°
Air pressure supply :	mind. 2 bar, max. 8 bar
Operating medium :	Dry and filtered compressed air
Ambient temperature :	-25°C to +80°C
Mounting position :	any
Resistance to corrosion :	Industrial atmosphere
Lubrication :	Life time lubrication with grease ISO 51825-K2K-30
Seals :	NBR-O-Rings, 70 Shore
Coatings :	Housing anodized and colour sealed End caps - CED Cathodic electrodeposition
Maintenance and inspection :	AMG actuators are free of maintenance within the life time. Provided that: <ul style="list-style-type: none">• the actuator is properly mounted• the operating medium used is clean and non-aggressive• the actuator is operated under normal ambient conditions• the actuator is used in compliance with the intended use (see assembly and maintenance manual)
Applied standard:	DIN EN ISO 5211, DIN EN 15714-3, VDI / VDE 3845, DIN 79



SAF-HD



SAD-HD

AMG-PESCH®



an ERIKS company

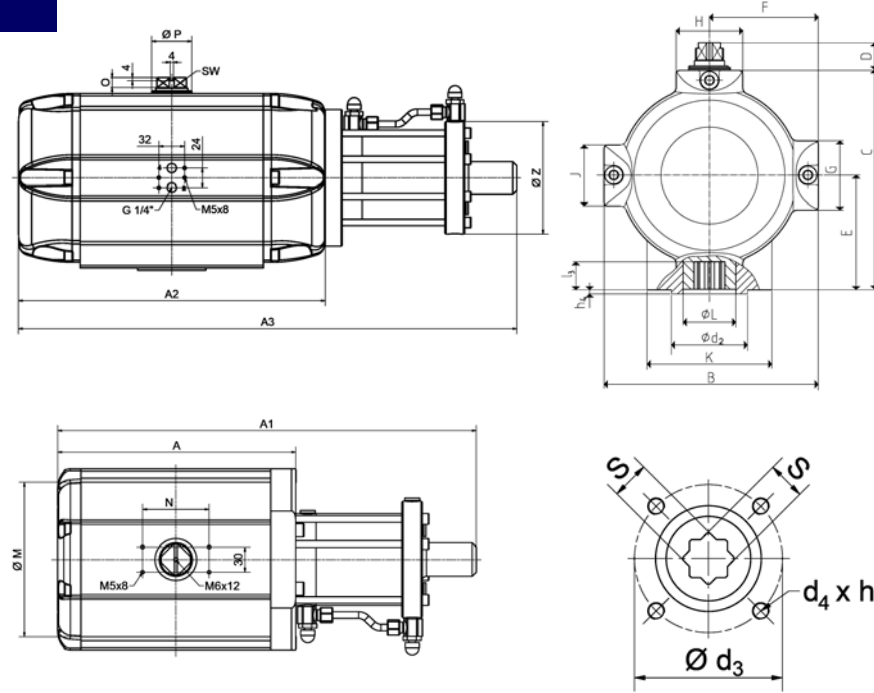
AMG-PESCH GmbH
Adam-Riese-Straße 1
D - 50996 Köln
Tel.: +49-(0) 22 36 - 89 16 - 0
Fax: +49-(0) 22 36 - 89 16 - 73
info@amg-pesch.com
www.amg-pesch.com

DOUBLE-PISTON QUARTER TURN ACTUATORS
TYPE SAD-HD / SAF-HD 90°

Size	45
Weight [kg]	
Type SAD-HD	97
Type SAF-HD	120
Stroke volume [dm ³]	
Type SAD-HD	25,6
Type SAF-HD	14,7
Operating times [sec.] ¹⁾	
Type SAD-HD OPEN	8
Type SAD-HD CLOSE	9
Type SAF-HD ²⁾ OPEN	10
Type SAF-HD ²⁾ CLOSE	7

1) operating times at 4,5 bar air pressure supply without load (standard values)

2) Type SAF-HD with 9 springs



Type	number of springs n	spring-torque Ms [Nm]	air torque Ma [Nm] at operating pressure pe [bar]																											
			2 bar		2,5 bar		3 bar		3,5 bar		4 bar		4,5 bar		5 bar		5,5 bar		6 bar		6,5 bar		7 bar		7,5 bar		8 bar			
			MIN	MAX	MIN	MAX	MIN	MAX	MIN	MAX	MIN	MAX	MIN	MAX	MIN	MAX	MIN	MAX	MIN	MAX	MIN	MAX	MIN	MAX	MIN	MAX	MIN	MAX	MIN	MAX
SAD-HD 45	-	-	893		1156		1419		1674		1934		2199		2457		2717		2980		3245		3495		3744		3994			
SAF-HD 45	4	352 585	308 541	571 804	834 1067	1089 1322	1349 1582	1614 1847	1872 2105	2132 2365	2395 2628	2660 2893	2910 3143	3159 3392	3409 3642															
	5	440 732	161 453	424 716	687 979	942 1234	1202 1494	1467 1759	1725 2017	1985 2277	2248 2540	2513 2805	2763 3055	3012 3304	3262 3554															
	6	528 878		278 628	541 891	796 1146	1056 1406	1321 1671	1579 1929	1839 2189	2102 2452	2367 2717	2617 2967	2866 3216	3116 3466															
	7	616 1025		131 540	394 803	649 1058	909 1318	1174 1583	1432 1841	1692 2101	1955 2364	2220 2629	2470 2879	2719 3128	2969 3378															
	8	705 1171			248 714	503 969	763 1229	1028 1494	1286 1752	1546 2012	1809 2275	2074 2540	2324 2790	2573 3039	2823 3289															
	9	793 1317			102 626	357 881	617 1141	882 1406	1140 1664	1400 1924	1663 2187	1928 2452	2178 2702	2427 2951	2677 3201															
	10	881 1464				210 793	470 1053	735 1318	993 1576	1253 1836	1516 2099	1781 2364	2031 2614	2280 2863	2530 3113															
	11	969 1610				64 705	324 965	589 1230	847 1488	1107 1748	1370 2011	1635 2276	1885 2526	2134 2775	2384 3025															
12	1057 1756					178 877	443 1142	701 1400	961 1660	1224 1923	1489 2188	1739 2438	1988 2687	2238 2937																

Design	SAD-HD / SAF-HD
Size	45
A / A1 (double-acting)	475 / 867
A2 / A3 (single-acting)	694 / 1023
B	330
C	337
D	30
E	175
F	165
G	84
H	125
K	150
Ø L	106
J	84
Ø M	292
N	130
O	18
Ø P	90
Ø Z	220
SW	46
Connection ISO 5211	F16
Ø d ₂	130
Ø d ₃	165
d ₄ x h ₃	M20x32
Number of screws	4
h ₄	5
l ₃	50
s	46

AMG-PESCH®



an ERIKS company

AMG-PESCH GmbH
 Adam-Riese-Straße 1
 D - 50996 Köln
 Tel.: +49-(0) 22 36 - 89 16 - 0
 Fax: +49-(0) 22 36 - 89 16 - 73
info@amg-pesch.com
www.amg-pesch.com