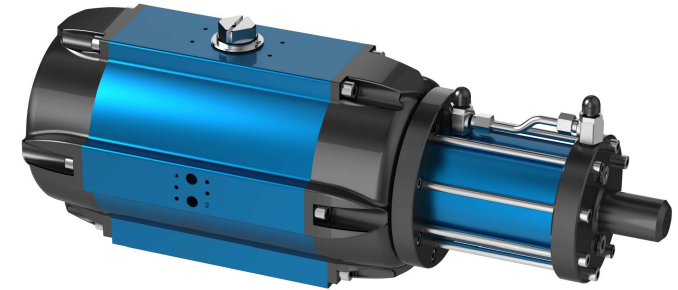


DOUBLE-PISTON QUARTER TURN ACTUATORS

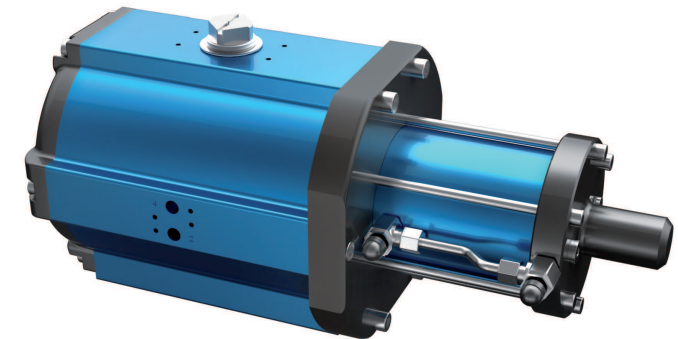
TYPE SAD-HD / SAF-HD 90°

Technical Data

Design :	Pneumatic double-piston quarter turn actuator with hydraulic damping
Design features :	Rack-and-pinion system, piston guide via guide rods Adjustable operating times to avoid pressure impacts in the piping system Operating time independent from working pressure
Angle of rotation :	0°-90°, also available in 135°
Air pressure supply :	mind. 2 bar, max. 8 bar
Operating medium :	Dry and filtered compressed air
Ambient temperature :	-25°C to +80°C
Mounting position :	any
Resistance to corrosion :	Industrial atmosphere
Lubrication :	Life time lubrication with grease ISO 51825-K2K-30
Seals :	NBR-O-Rings, 70 Shore
Coatings :	Housing anodized and colour sealed End caps - CED Cathodic electrodeposition
Maintenance and inspection :	AMG actuators are free of maintenance within the life time. Provided that: <ul style="list-style-type: none">• the actuator is properly mounted• the operating medium used is clean and non-aggressive• the actuator is operated under normal ambient conditions• the actuator is used in compliance with the intended use (see assembly and maintenance manual)
Applied standard:	DIN EN ISO 5211, DIN EN 15714-3, VDI / VDE 3845, DIN 79



SAF-HD



SAD-HD

AMG-PESCH®



an ERIKS company

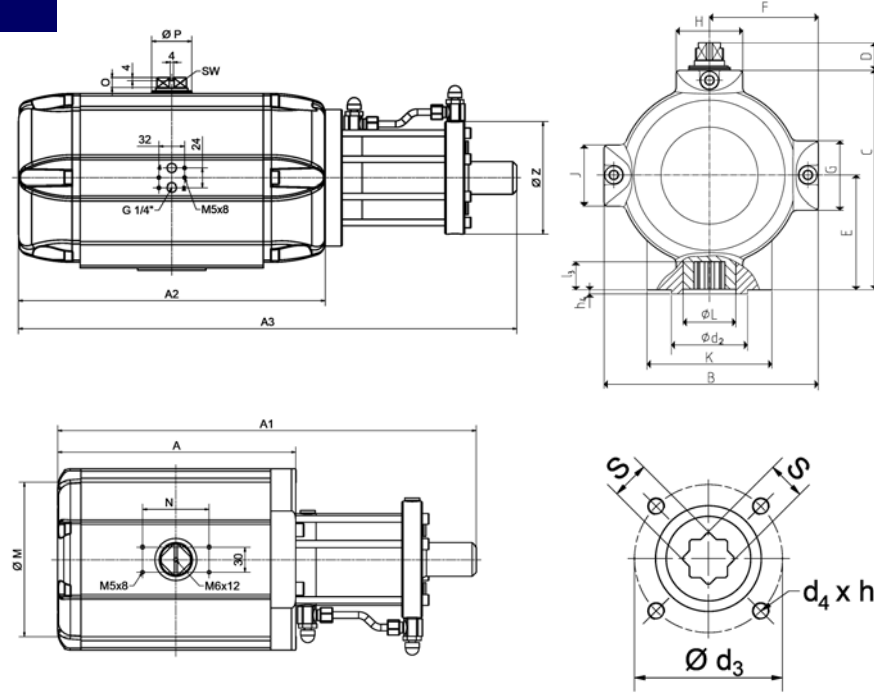
AMG-PESCH GmbH
Adam-Riese-Straße 1
D - 50996 Köln
Tel.: +49-(0) 22 36 - 89 16 - 0
Fax: +49-(0) 22 36 - 89 16 - 73
info@amg-pesch.com
www.amg-pesch.com

DOUBLE-PISTON QUARTER TURN ACTUATORS
TYPE SAD-HD / SAF-HD 90°

Size	15
Weight [kg]	
Type SAD-HD	6,0
Type SAF-HD	7,0
Stroke volume [dm ³]	
Type SAD-HD	0,7
Type SAF-HD	0,4
Operating times [sec.] ¹⁾	
Type SAD-HD OPEN	1
Type SAD-HD CLOSE	1
Type SAF-HD ²⁾ OPEN	1
Type SAF-HD ²⁾ CLOSE	1

1) operating times at 4,5 bar air pressure supply without load (standard values)

2) Type SAF-HD with 9 springs



Type	number of springs n	spring-torque		air torque Ma [Nm] at operating pressure pe [bar]																											
		Ms [Nm]		2 bar		2,5 bar		3 bar		3,5 bar		4 bar		4,5 bar		5 bar		5,5 bar		6 bar		6,5 bar		7 bar		7,5 bar		8 bar			
		MIN	MAX	MIN	MAX	MIN	MAX	MIN	MAX	MIN	MAX	MIN	MAX	MIN	MAX	MIN	MAX	MIN	MAX	MIN	MAX	MIN	MAX	MIN	MAX	MIN	MAX	MIN	MAX		
SAD-HD 15	-	-	-	23	29	36	42	49	55	62	68	75	82	88	94	101															
SAF-HD 15	4	8,8	14,7	8,3	14,2	14,3	20,2	21,3	27,2	27,3	33,2	34,3	40,2	40,3	46,2	47,3	53,2	53,3	59,2	60,3	66,2	67,3	73,2	73,3	79,2	79,3	85,2	86,3	92,2		
	5	11,0	18,4	4,6	12,0	10,6	18,0	17,6	25,0	23,6	31,0	30,6	38,0	36,6	44,0	43,6	51,0	49,6	57,0	56,6	64,0	63,6	71,0	69,6	77,0	75,6	83,0	82,6	90,0		
	6	13,3	22,0	1,0	9,7	7,0	15,7	14,0	22,7	20,0	28,7	27,0	35,7	33,0	41,7	40,0	48,7	46,0	54,7	53,0	61,7	60,0	68,7	66,0	74,7	72,0	80,7	79,0	87,7		
	7	15,5	25,7			3,3	13,5	10,3	20,5	16,3	26,5	23,3	33,5	29,3	39,5	36,3	46,5	42,3	52,5	49,3	59,5	56,3	66,5	62,3	72,5	68,3	78,5	75,3	85,5		
	8	17,7	29,4					6,6	18,3	12,6	24,3	19,6	31,3	25,6	37,3	32,6	44,3	38,6	50,3	45,6	57,3	52,6	64,3	58,6	70,3	64,6	76,3	71,6	83,3		
	9	19,9	33,0					3,0	16,1	9,0	22,1	16,0	29,1	22,0	35,1	29,0	42,1	35,0	48,1	42,0	55,1	49,0	62,1	55,0	68,1	61,0	74,1	68,0	81,1		
	10	22,1	36,7						5,3	19,9	12,3	26,9	18,3	32,9	25,3	39,9	31,3	45,9	38,3	52,9	45,3	59,9	51,3	65,9	57,3	71,9	64,3	78,9			
	11	24,3	40,4						1,6	17,7	8,6	24,7	14,6	30,7	21,6	37,7	27,6	43,7	34,6	50,7	41,6	57,7	47,6	63,7	53,6	69,7	60,6	76,7			
12	26,5	44,0							5,0	22,5	11,0	28,5	18,0	35,5	24,0	41,5	31,0	48,5	38,0	55,5	44,0	61,5	50,0	67,5	57,0	74,5					

Design	SAD-HD / SAF-HD
Size	15
A / A1 (double-acting)	150 / 319
A2 / A3 (single-acting)	198 / 375
B	116
C	111
D	20
E	56
F	61
G	50
H	40
K	64
Ø L	28
J	44
Ø M	93
N	80
O	12
Ø P	22
Ø Z	100
SW	12
Connection ISO 5211	F05
Ø d ₂	35
Ø d ₃	50
d ₄ x h ₃	M6x10
Number of screws	4
h ₄	3
l ₃	16
s	14

AMG-PESCH®



an ERIKS company

AMG-PESCH GmbH
 Adam-Riese-Straße 1
 D - 50996 Köln
 Tel.: +49-(0) 22 36 - 89 16 - 0
 Fax: +49-(0) 22 36 - 89 16 - 73
info@amg-pesch.com
www.amg-pesch.com