

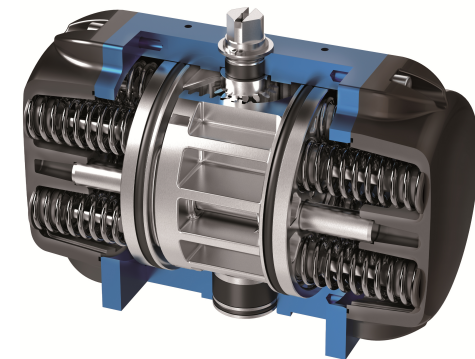


DOUBLE-PISTON QUARTER TURN ACTUATORS

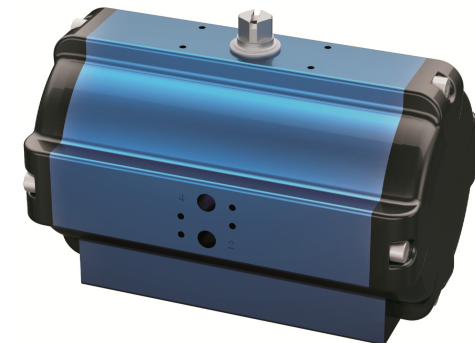
TYPE BR16 SAD / SAF 90°

Technical Data

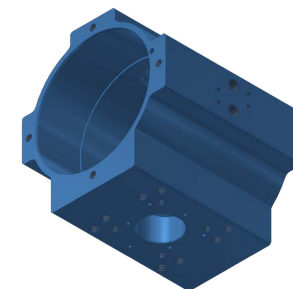
Design :	Pneumatic double-piston quarter turn actuator
Design features :	Rack-and-pinion system, piston guide via guide rods
Angle of rotation :	0°-90°
Air pressure supply :	mind. 2 bar, max. 10 bar
Operating medium :	Dry and filtered compressed air
Ambient temperature :	-25°C to +80°C
Mounting position :	any
Resistance to corrosion :	Industrial atmosphere
Lubrication :	Life time lubrication with grease ISO 51825-K2K-30
Seals :	NBR-O-Rings, 70 Shore
Coatings :	Housing anodized and colour sealed End caps - CED cathodic electrodeposition
Maintenance and inspection :	AMG actuators are free of maintenance within the life time. Provided that: <ul style="list-style-type: none"> • the actuator is properly mounted • the operating medium used is clean and non-aggressive • the actuator is operated under normal ambient conditions • the actuator is used in compliance with the intended use (see assembly and maintenance manual)
Applied standard:	DIN EN ISO 5211, DIN EN 15714-3, VDI / VDE 3845, DIN 79
Options:	Extended angle of rotation 120°, 135°, 180° Adjustable inner / outer travel stops up to +/- 5° via travel-stop-module (TSM) Ambient temperature up to +100°C Ambient temperature down to -40°C Sealing elements made of FKM (viton) or alternatively fluorosilicone Tailor made mounting kits and dimensioning acc. To customer requirements Variable cycle times (fast / slow) Variable sens of rotation (clockwise / counterclockwise) Coating options: Hard-Coat, chemical nickelplating, plastic coating, special lacquer



SAF

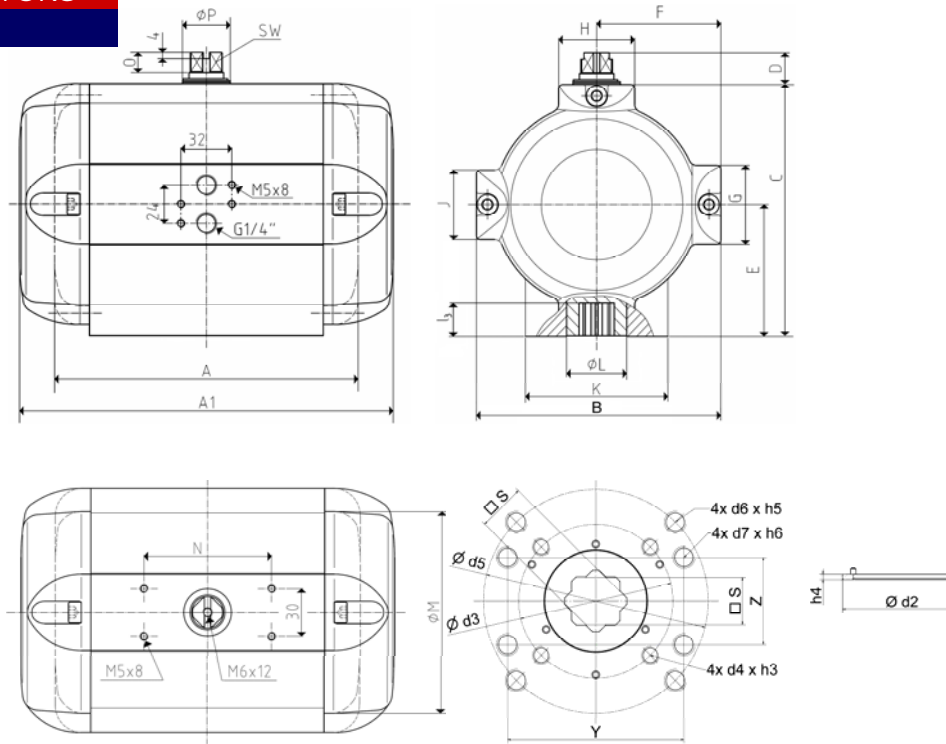


SAD





DOUBLE-PISTON QUARTER TURN ACTUATORS
TYPE BR16 SAD / SAF 90°



Size	35	
Weight [kg]		
Type SAD	18,5	
Type SAF	26,0	
Stroke volume [dm³]		
Type SAD	6,8	
Type SAF	3,9	
Operating times [sec.] ¹⁾		
Type SAD OPEN	1,0	
Type SAD CLOSE	1,0	
Type SAF ²⁾ OPEN	2,0	
Type SAF ²⁾ CLOSE	1,0	

1) operating times at 4,5 bar air pressure supply without load (standard values)

2) Type SAF with 9 springs

Type	number of springs n	spring-torque Ms [Nm]	air torque Ma [Nm] at operating pressure pe [bar]																											
			2 bar		2,5 bar		3 bar		3,5 bar		4 bar		4,5 bar		5 bar		5,5 bar		6 bar		6,5 bar		7 bar		7,5 bar		8 bar			
			MIN	MAX	MIN	MAX	MIN	MAX	MIN	MAX	MIN	MAX	MIN	MAX	MIN	MAX	MIN	MAX	MIN	MAX	MIN	MAX	MIN	MAX	MIN	MAX	MIN	MAX	MIN	MAX
SAD 35	-	-	221		286		350		413		478		543		607		671		736		801		863		925		986			
SAF 35	4	87 144	77	134	142	199	206	263	269	326	334	391	399	456	463	520	527	584	592	649	657	714	719	776	781	838	842	899		
	5	109 180	41	112	106	177	170	241	233	304	298	369	363	434	427	498	491	562	556	627	621	692	683	754	745	816	806	877		
	6	131 216	5	90	70	155	134	219	197	282	262	347	327	412	391	476	455	540	520	605	585	670	647	732	709	794	770	855		
	7	152 252			34	134	98	198	161	261	226	326	291	391	355	455	419	519	484	584	549	649	611	711	673	773	734	834		
	8	174 288					62	176	125	239	190	304	255	369	319	433	383	497	448	562	513	627	575	689	637	751	698	812		
	9	196 324					26	154	89	217	154	282	219	347	283	411	347	475	412	540	477	605	539	667	601	729	662	790		
	10	218 360							53	195	118	260	183	325	247	389	311	453	376	518	441	583	503	645	565	707	626	768		
	11	239 396							17	174	82	239	147	304	211	368	275	432	340	497	405	562	467	624	529	686	590	747		
	12	261 432									46	217	111	282	175	346	239	410	304	475	369	540	431	602	493	664	554	725		
	special version																													
	13	283 472									6	195	71	260	135	324	199	388	264	453	329	518	391	580	453	642	514	703		
	14	305 504											39	238	103	302	167	366	232	431	297	496	359	558	421	620	482	681		

Design	SAD / SAF	
Size	35	
A (double-acting)	284	
A1 (single-acting)	382	
B	218	
C	217	
D	20	
E	112	
F	109	
G	50	
H	90	
K	108	
Ø L	62	
J	50	
Ø M	192	
N	80	
O	12	
Ø P	50	
SW	30	
Connection ISO 5211	F12	F10
Ø d2	85	70
h4	2,5	2,5
Ø d3	102	
4x d4xh3	4x M10x16	
Ø d5	125	
l ₃	30	
s	27	
4x d6xh5	4x M12x20	
4x d7xh6	4x M16x19	
Y	138	
Z	76	
W1	-	
X1	-	
G1	-	