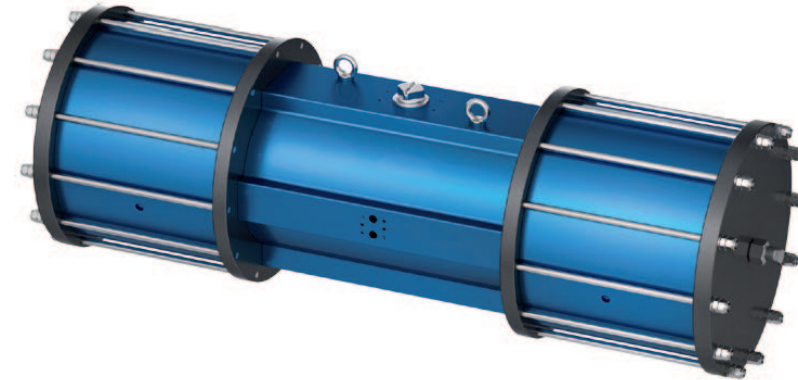


DOUBLE-PISTON QUARTER TURN ACTUATORS

TYPE SADP - M 180°

Technical Data

Design :	Pneumatic double-piston 180° actuator with a 90° middle position
Design features :	Rack-and-pinion system, piston guide via guide rods
Angle of rotation :	Fixed rotation angle 0° to 180° (normal operation) Spring fixed 90° middle position
Air pressure supply :	min. 2 bar, max. 8 bar
Operating medium :	Dry and filtered compressed air
Ambient temperature :	-25°C to +80°C
Mounting position :	any
Resistance to corrosion :	Industrial atmosphere
Lubrication :	Life time lubrication with grease ISO 51825-K2K-30
Seals :	NBR-O-Rings, 70 Shore
Coatings :	Housing anodized and colour sealed End caps - CED Cathodic electrodeposition
Maintenance and inspection :	AMG actuators are free of maintenance within the life time. Provided that: <ul style="list-style-type: none">• the actuator is properly mounted• the operating medium used is clean and non-aggressive• the actuator is operated under normal ambient conditions• the actuator is used in compliance with the intended use (see assembly and maintenance manual)
Applied standard:	DIN EN ISO 5211, DIN EN 15714-3, VDI / VDE 3845, DIN 79



SADP - M 180°

AMG-**PESCH**®

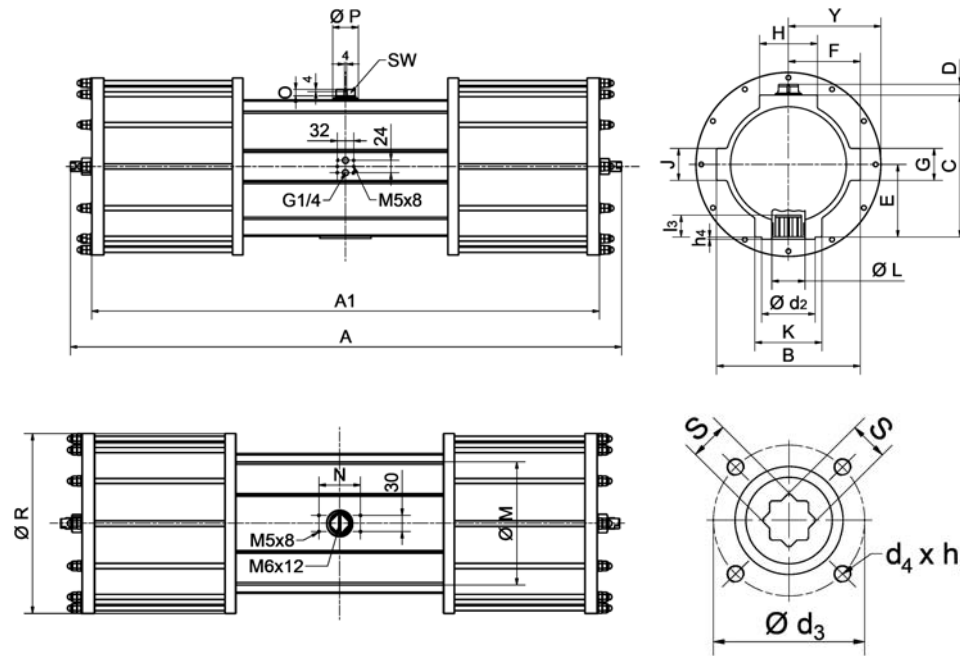


an **ERIKS** company

AMG-**PESCH** GmbH
Adam-Riese-Straße 1
D - 50996 Köln
Tel.: +49-(0) 22 36 - 89 16 - 0
Fax: +49-(0) 22 36 - 89 16 - 73
info@amg-pesch.com
www.amg-pesch.com

DOUBLE-PISTON QUARTER TURN ACTUATORS
TYPE SADF - M 180°

Size	30
Weight [kg]	
Type SADF - M	53
Stroke volume [dm ³]	
Type SADF - M	9,3
Operating times [sec.] ¹⁾	
Type SADF - M ²⁾ OPEN	2,1
Type SADF - M ²⁾ CLOSE	2,1



1) operating times at 4,5 bar air pressure supply without load (standard values)

2) Type SADF-M with 42 springs

Type	number of springs n	spring-torque Ms [Nm]	air torque Ma [Nm] at operating pressure pe [bar]																									
			2 bar		2,5 bar		3 bar		3,5 bar		4 bar		4,5 bar		5 bar		5,5 bar		6 bar		6,5 bar		7 bar		7,5 bar		8 bar	
			MIN	MAX	MIN	MAX	MIN	MAX	MIN	MAX	MIN	MAX	MIN	MAX	MIN	MAX	MIN	MAX	MIN	MAX	MIN	MAX	MIN	MAX	MIN	MAX	MIN	MAX
SADF-M 30	-	-	91	117	144	170	196	223	249	276	302	329	355	380	405													
	18	94	153																									
	24	125	204																									
	28	146	238																									
	34	177	289																									
	38	198	323																									
	42	218	357																									

Design	SADF - M
Size	30
A	810
A1	740
B	174
C	174
D	20
E	89
F	87
G	50
H	64
K	90
Ø L	47
J	50
Ø M	145
N	80
O	12
Ø P	36
Ø R	220
Y	110
SW	17
Connection ISO 5211	F10
Ø d ₂	70
Ø d ₃	102
d ₄ x h ₃	M10x16
Number of screws	4
h ₄	3
l ₃	25
s	22

AMG-PESCH®



an ERIKS company

AMG-PESCH GmbH
 Adam-Riese-Straße 1
 D - 50996 Köln
 Tel.:+49-(0) 22 36 - 89 16 - 0
 Fax:+49-(0) 22 36 - 89 16 - 73
info@amg-pesch.com
www.amg-pesch.com

SUBJECT TO TECHNICAL MODIFICATION