



DOUBLE-PISTON QUARTER TURN ACTUATORS

TYPE BR03 SADT / SADP 90°

Technical Data

Design :	SADT: Pneumatic double acting quarter turn actuator with tandem pistons for high torques SADP: Pneumatic double acting quarter turn actuator with spring return function
Design features :	Rack-and-pinion system, piston guide via guide rods
Angle of rotation :	0°-90°
Air pressure supply :	mind. 2 bar, max. 6 bar
Operating medium :	Dry and filtered compressed air
Ambient temperature :	-25°C to +80°C
Mounting position :	any
Resistance to corrosion :	Industrial atmosphere
Lubrication :	Life time lubrication with grease ISO 51825-K2K-30
Seals :	NBR-O-Rings, 70 Shore
Coatings :	Housing anodized and colour sealed End caps - CED Cathodic electrodeposition
Maintenance and inspection :	AMG actuators are free of maintenance within the life time. Provided that: <ul style="list-style-type: none"> • the actuator is properly mounted • the operating medium used is clean and non-aggressive • the actuator is operated under normal ambient conditions • the actuator is used in compliance with the intended use <small>(see assembly and maintenance manual)</small>
Applied standards :	DIN EN ISO 5211, DIN EN 15714-3, VDI / VDE 3845, DIN 79
Options:	Adjustable inner / outer travel stops up to +/- 5° via travel-stop-module (TSM) Ambient temperature up to +100°C Ambient temperature down to -40°C Sealing elements made of FKM (viton) or alternatively fluorosilicone Variable sens of rotation (clockwise / counterclockwise) Coating options: Hard-Coat, chemical nickelplating, plastic coating, special lacquer



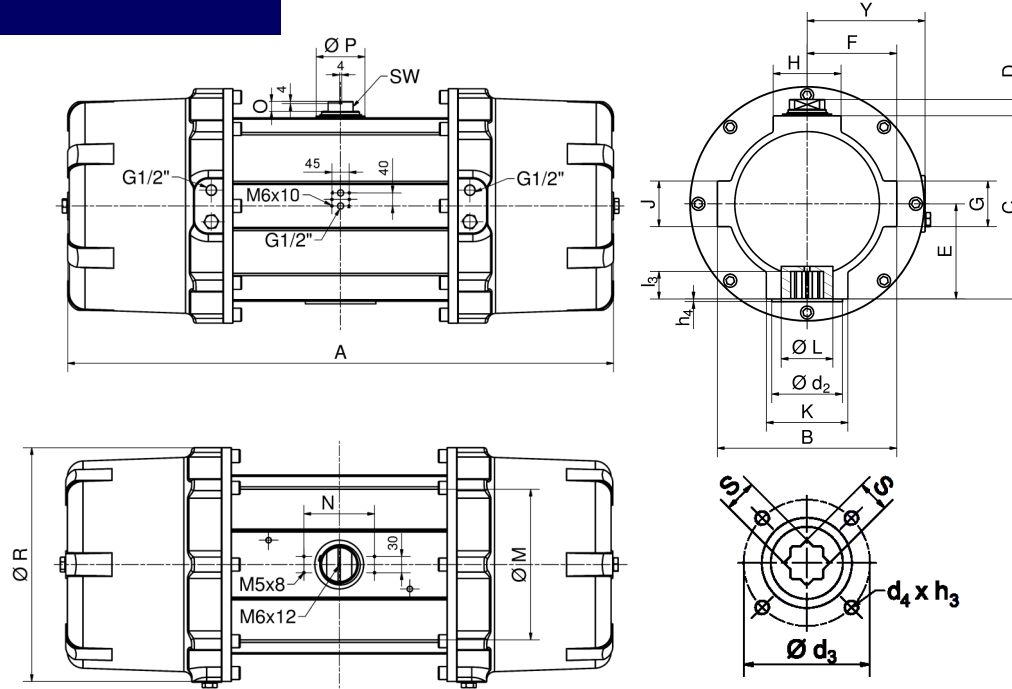
SADT / SADP



DOUBLE-PISTON QUARTER TURN ACTUATORS
TYPE BR03 SADT / SADF 90°

Size	45-60	
Weight [kg]		
Type SADT	155	
Type SADF	190	
Stroke volume [dm ³]		
Type SADT	94,6	
Type SADF	30,5	
Operating times [sec.] ¹⁾		
Type SADT OPEN	35	
Type SADT CLOSE	45	
Type SADF ²⁾ OPEN	20	
Type SADF ²⁾ CLOSE	25	

1) operating times at 4,5 bar air pressure supply without load (standard values)
 2) Type SADF with 25 springs



Design	SADT / SADF
Size	45-60
A	1008
B	330
C	337
D	30
E	175
F	165
G	84
H	125
K	150
Ø L	106
J	84
Ø M	292
N	130
O	18
Ø P	90
Ø R	431
Y	226
SW	46
Connection ISO 5211	F16
Ø d ₂	130
Ø d ₃	165
d ₄ x h ₃	M20x32
Number of screws	4
h ₄	5
l ₃	50
s	46

Type	air supply pe [bar]	number of springs n	spring torque Ms [Nm]		air torque Ma [Nm] at operating pressure pe [bar]								
			MIN	MAX	2 bar	2,5 bar	3 bar	3,5 bar	4 bar	4,5 bar	5 bar	5,5 bar	6 bar
SADT 45-60	-	-	-		2671	3339	4006	4674	5342	6010	6677	7345	8013
SADF 45-60	2	10	880	1470	893	1156	1419	1674	1934	2199	2457	2717	2980
	2,5	13	1144	1911		1156	1419	1674	1934	2199	2457	2717	2980
	3	16	1408	2352			1419	1674	1934	2199	2457	2717	2980
	3,5	19	1672	2793				1674	1934	2199	2457	2717	2980
	4	22	1936	3234					1934	2199	2457	2717	2980
	4,5	25	2200	3675						2199	2457	2717	2980
	5	28	2464	4116							2457	2717	2980
	5,5	31	2728	4557								2717	2980
6	34	2992	4998									2980	