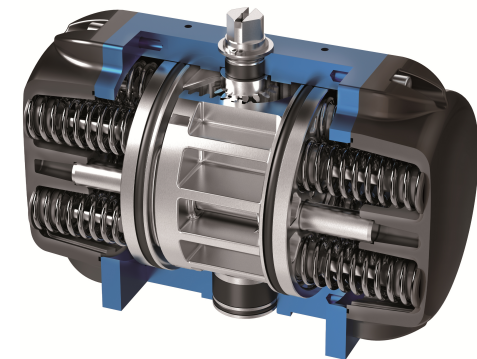


DOUBLE-PISTON QUARTER TURN ACTUATORS

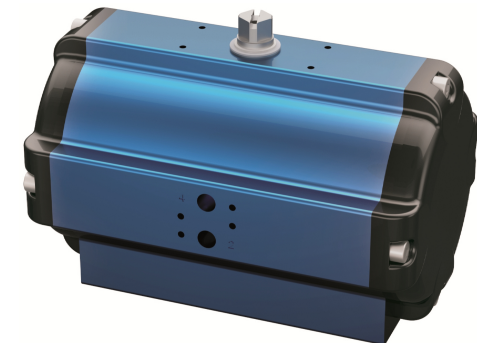
TYPE BR16 SAD / SAF 90°

Technical Data

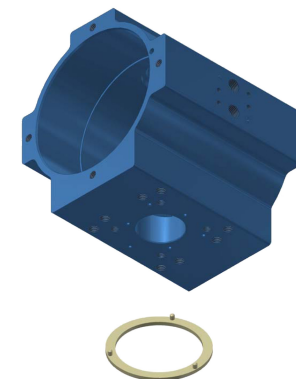
Design :	Pneumatic double-piston quarter turn actuator
Design features :	Rack-and-pinion system, piston guide via guide rods
Angle of rotation :	0°-90°
Air pressure supply :	mind. 2 bar, max. 10 bar
Operating medium :	Dry and filtered compressed air
Ambient temperature :	-25°C to +80°C
Mounting position :	any
Resistance to corrosion :	Industrial atmosphere
Lubrication :	Life time lubrication with grease ISO 51825-K2K-30
Seals :	NBR-O-Rings, 70 Shore
Coatings :	Housing anodized and colour sealed End caps - CED cathodic electrodeposition
Maintenance and inspection :	AMG actuators are free of maintenance within the life time. Provided that: <ul style="list-style-type: none"> • the actuator is properly mounted • the operating medium used is clean and non-aggressive • the actuator is operated under normal ambient conditions • the actuator is used in compliance with the intended use (see assembly and maintenance manual)
Applied standard:	DIN EN ISO 5211, DIN EN 15714-3, VDI / VDE 3845, DIN 79
Options:	Extended angle of rotation 120°, 135°, 180° Adjustable inner / outer travel stops up to +/- 5° via travel-stop-module (TSM) Ambient temperature up to +100°C Ambient temperature down to -40°C Sealing elements made of FKM (viton) or alternatively fluorosilicone Tailor made mounting kits and dimensioning acc. To customer requirements Variable cycle times (fast / slow) Variable sens of rotation (clockwise / counterclockwise) Coating options: Hard-Coat, chemical nickelplating, plastic coating, special lacquer



SAF



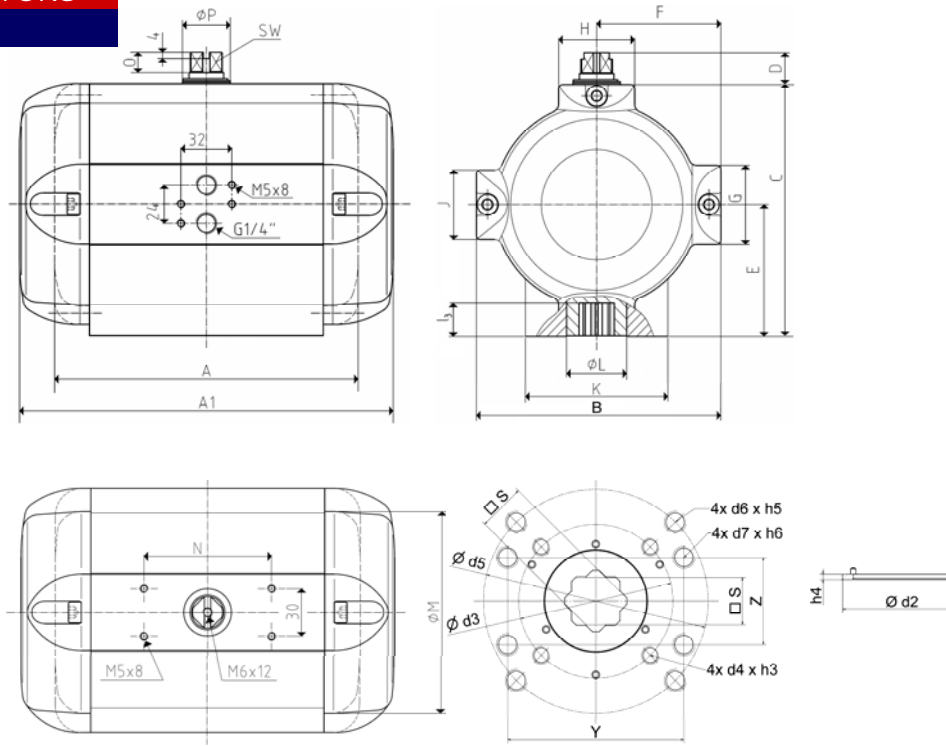
SAD





an ERIKS company

DOUBLE-PISTON QUARTER TURN ACTUATORS
TYPE BR16 SAD / SAF 90°



Size	33	
Weight [kg]		
Type SAD	13,5	
Type SAF	18,5	
Stroke volume [dm³]		
Type SAD	5,1	
Type SAF	3,0	
Operating times [sec.] ¹⁾		
Type SAD OPEN	0,8	
Type SAD CLOSE	0,8	
Type SAF ²⁾ OPEN	1,0	
Type SAF ²⁾ CLOSE	0,5	

1) operating times at 4,5 bar air pressure supply without load (standard values)

2) Type SAF with 9 springs

Type	number of springs n	spring-torque Ms [Nm]	air torque Ma [Nm] at operating pressure pe [bar]																											
			2 bar		2,5 bar		3 bar		3,5 bar		4 bar		4,5 bar		5 bar		5,5 bar		6 bar		6,5 bar		7 bar		7,5 bar		8 bar			
			MIN	MAX	MIN	MAX	MIN	MAX	MIN	MAX	MIN	MAX	MIN	MAX	MIN	MAX	MIN	MAX	MIN	MAX	MIN	MAX	MIN	MAX	MIN	MAX	MIN	MAX	MIN	MAX
SAD 33	-	-	166		215		264		312		360		410		458		506		555		605		651		698		744			
SAF 33	4	66 109	57 100	106 149	155 198	203 246	251 294	301 344	349 392	397 440	446 489	496 539	542 585	589 632	635 678															
	5	82 136	30 84	79 133	128 182	176 230	224 278	274 328	322 376	370 424	419 473	469 523	515 569	562 616	608 662															
	6	98 163	3 68	52 117	101 166	149 214	197 262	247 312	295 360	343 408	392 457	442 507	488 553	535 600	581 646															
	7	115 190		25 100	74 149	122 197	170 245	220 295	268 343	316 391	365 440	415 490	461 536	508 583	554 629															
	8	131 217		47 133	95 181	143 229	193 279	241 327	289 375	338 424	388 474	434 520	481 567	527 613																
	9	148 244		20 116	68 164	116 212	166 262	214 310	262 358	311 407	361 457	407 503	454 550	500 596																
	10	164 271		41 148	89 196	139 246	187 294	235 342	284 391	334 441	380 487	427 534	473 580																	
	11	180 299		13 132	61 180	111 230	159 278	207 326	256 375	306 425	352 471	399 518	445 564																	
	12	197 326		34 163	84 213	132 261	180 309	229 358	279 408	325 454	372 501	418 547																		
	special version																													
13	213 355		5 147	55 197	103 245	151 293	200 342	250 392	296 438	343 485	389 531																			
14	230 380		30 180	78 228	126 276	175 325	225 375	271 421	318 468	364 514																				

Design	SAD / SAF	
Size	33	
A (double-acting)	253	
A1 (single-acting)	365	
B	204	
C	202	
D	20	
E	103	
F	102	
G	50	
H	90	
K	108	
Ø L	56	
J	50	
Ø M	175	
N	80	
O	12	
Ø P	45	
SW	22	
Connection ISO 5211	F12	F10
Ø d2	85	70
h4	2,5	2,5
Ø d3	102	
4x d4xh3	4x M10x16	
Ø d5	125	
l ₃	30	
s	27	
4x d6xh5	4x M12x20	
4x d7xh6	4x M16x19	
Y	138	
Z	76	
W1	-	
X1	-	
G1	-	