

## Technical specifications

PWS16720220127

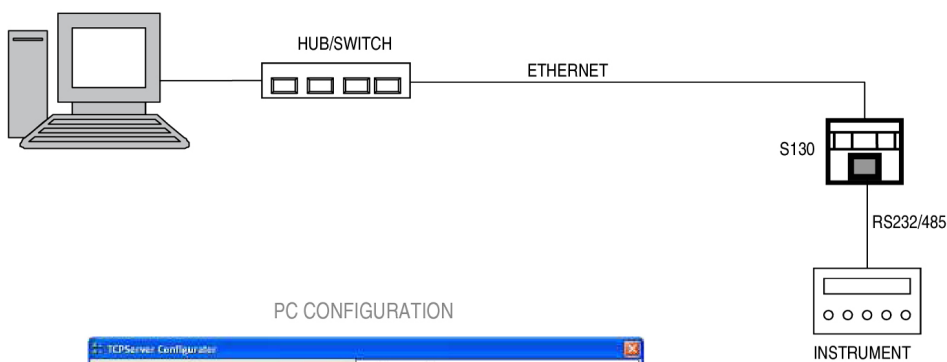
The Serial Converter S130 Profibus/Serial Bridge is used for the serial connection of various long distance units, generally from 15 m to 200 m. The Serial Converter S130 has screw terminal blocks and it may be mounted on OMEGA bar.

<b>Material:</b>	NORYL UL 94 V-0 flame retardant
<b>Temperature range:</b>	-10°C ÷ +50°C (max umidity 85% without condensation)
<b>Storage temperature:</b>	-20 ÷ +60 °C
<b>Serial port:</b>	RS232, RS485 o Profibus DP
<b>Power supply:</b>	10 - 30 Vdc
<b>Regulatory compliance:</b>	EN61000-6-2, EN61000-6-3, EN61010-1
<b>Baud rate fieldbus:</b>	<= 12 Mbit/sec
<b>Dimensions:</b>	55mm x 90mm x 58mm (l x h x p)
<b>Baud rate:</b>	<= 115 kb/s (default 9600 b/s)
<b>Isolation:</b>	Class II
<b>Cable Lenght:</b>	15m (RS232), 1000m (RS485)
<b>Installation category:</b>	Cat. II
<b>Power consumption:</b>	2 W (80 mA max @ 24 Vcc)

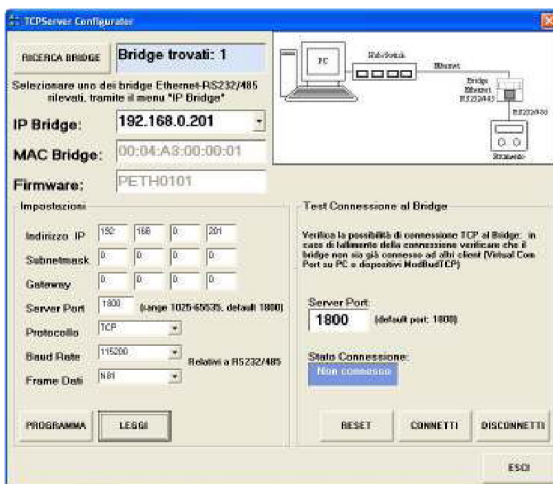


All indicated data may be changed without notice.  
All the measures indicated are expressed in millimeters (mm).

## ELECTRICAL DRAWING



PC CONFIGURATION



All indicated data may be changed without notice.  
 All the measures indicated are expressed in millimeters (mm).