

Automatic pump B38

Series 1028100

Centralized greasing system » Pumps for centralized lubrication » Electric pumps



Applications

- These types of pumps are perfect for lubrications that include a large number of greasing points on conveyor belts for mining, or steel mill rolling mills.

Features

- Possibility of different tanks of 60, 100 y 200 kg. Body made of cast aluminium according EN 1706 - AC-43100.
- Possibility of using oil or grease
- Different level options, visual level, electrical level of maximum, minimum and analog level.
- Different electric motors and reductions depending on the flow rate and the lubricant chosen
- Pressure control

Description

Large flow pump especially suitable for demanding working conditions (24 h/d) and with a large number of grease points. Its multiple variables offer a multitude of possibilities in terms of lubrication.



Design and operating principle

It is a piston pump with motorized drive, the engine gives movement to the chosen reduction, rolls more pinion, displacing a plunger which produces the injection of grease or oil.

Three models of deposit, 60, 100 and 200 kg with various types of levels depending on whether we grease with oil or grease, are an added value to allow greasing a prolonged period of time without maintenance.

An internal filter, an overpressure valve and a pressure gauge complement the control of this pump.

Installation

The installation of this pump must be carried out in a place with sufficient space for maintenance.

The pump is provided with legs made of cast aluminum of high resistance according to EN 1706 - AC-43100 with four lower screws to anchor it to the ground directly or on a bench.

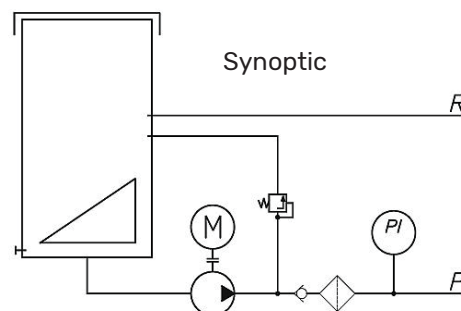
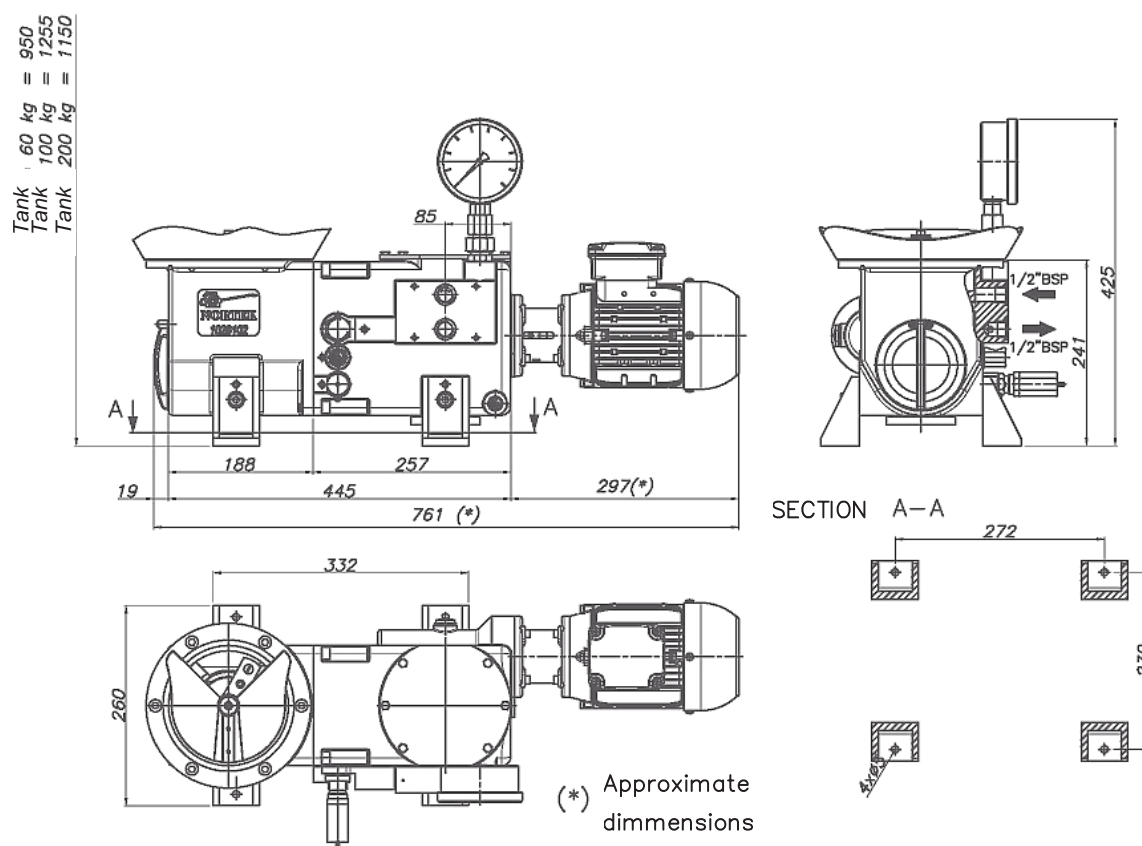
Another type of assembly that we offer is on a bench type 182XXXXXX centralizing the pump and the regulation and control systems at the same point, including if a terminal box or panel is required to also unify the electrical system.

Specifications

Recommended working pressure	250 bar		
Maximum working pressure	400 bar		
Connection	1/2" bsp		
Approximate weight	30 kg. (without tank and motor)		
Recommended temperature	-20 °C - +80 °C		
Flows			
Motor (kW / Size)	Reduction	Flow (50 Hz)	Flow (60 Hz)
1,5 kW 90L	1: 7,5	31 kg/h	38 kg/h
1,5 kW 90L	1: 10	24 kg/h	29 kg/h
1,1 Kw 90S	1: 15	16 kg/h	19 kg/h
0,75 kW 80B	1: 20	12 kg/h	14 kg/h
0,55 kW 80A	1: 30	8 kg/h	10 kg/h
0,37 kW 71B	1: 40	6 kg/h	7 kg/h

Dimensional drawing

Dimensions in mm



Ordering information

For the correct reference of the pump, the reduction, motor and its voltage must be selected from the table below.

The tank or any other configuration not described in the reference must be select from the accessories section.

Specifications	Reference		
Pump model	1028100	X	X X
Reductions			
1: 10		A	
1: 20		B	
1: 30		C	
1: 40		D	
1: 7,5		E	
1: 15		F	
Motors			
Motor 71 B14 0,37 kW			A
Motor 80 B14 0,55 kW			B
Motor 80 B14 0,75 kW			C
Motor 90 B5 1,1 kW			D
Motor 90 B5 1,5 kW			E
Voltage			
380 V 50 Hz			A
400 V 50 Hz			B
415 V 50 Hz			C
440 V 60 Hz			D
460 V 60 Hz			E
480 V 60 Hz			F

Accessories

Specifications	Reference
Reduction 1: 10 wheel + worm screw	1028037-05 + 1028038-05
Reduction 1: 20 wheel + worm screw	1028037-03 + 1028038-03
Reduction 1: 30 wheel + worm screw	1028037-02 + 1028038-02
Reduction 1: 40 wheel + worm screw	1028037-01 + 1028038-01
Reduction 1: 7,5 wheel + worm screw	1028037-06 + 1028038-06
Reduction 1: 15 wheel + worm screw	1028037-04 + 1028038-04
Coupling motor 71 B14 (0,37 kW)	1528105
Coupling motor 80 B14 (0,55 kW / 0.75 kW)	1528107
Coupling motor 90 B5 (1,1 kW / 1.5 kW)	1528115
Tank 60 kg	1128160
Minimum electrical level tank 60 kg	1628200-395
Minimum-Minimum electrical level tank 60 kg	1628200-420
Tank 100 kg	1128110
Minimum electrical level tank 100 kg	1628200-765
Minimum-Minimum electrical level tank 100 kg	1628200-795
Tank 200 kg	1128120
Position switch	Telemecanique XCK-M115
Position switch	Telemecanique XCK-M102
Level transmitter 0-10 V	2051400
Level transmitter 4-20 mA	2051401